



// MY
MMSW

WHAT A MASTER OF SOCIAL
WORK (MSW) MEANS FOR ME,
MY COMMUNITY AND THOSE IN
NEED OF SUPPORT AND SERVICES.



CHAMBERLAIN
UNIVERSITY

YOUR GUIDE TO AN MSW //

Whether you are exploring how to become a social worker or looking for opportunities to be an agent of change, this guide was created to assist you in answering all of the questions that may be on your mind as you consider options for fulfilling your passions.

- What careers are available in social work?
- Why pursue a Master of Social Work (MSW) degree?
- How long will an MSW take?
- What do I need to know before applying?
- How do I apply?

DO YOU HAVE A CALLING TO SUPPORT AND SERVE?

Are you passionate about advancing human rights and promoting social, economic and environmental justice?

Do you want to make a difference in the lives of individuals, families, groups, organizations and communities?

Are you seeking a career with purpose?

Do you enjoy working with diverse populations?

Do you want to be an agent of social change in your community and throughout the world?

WHAT IS SOCIAL WORK?

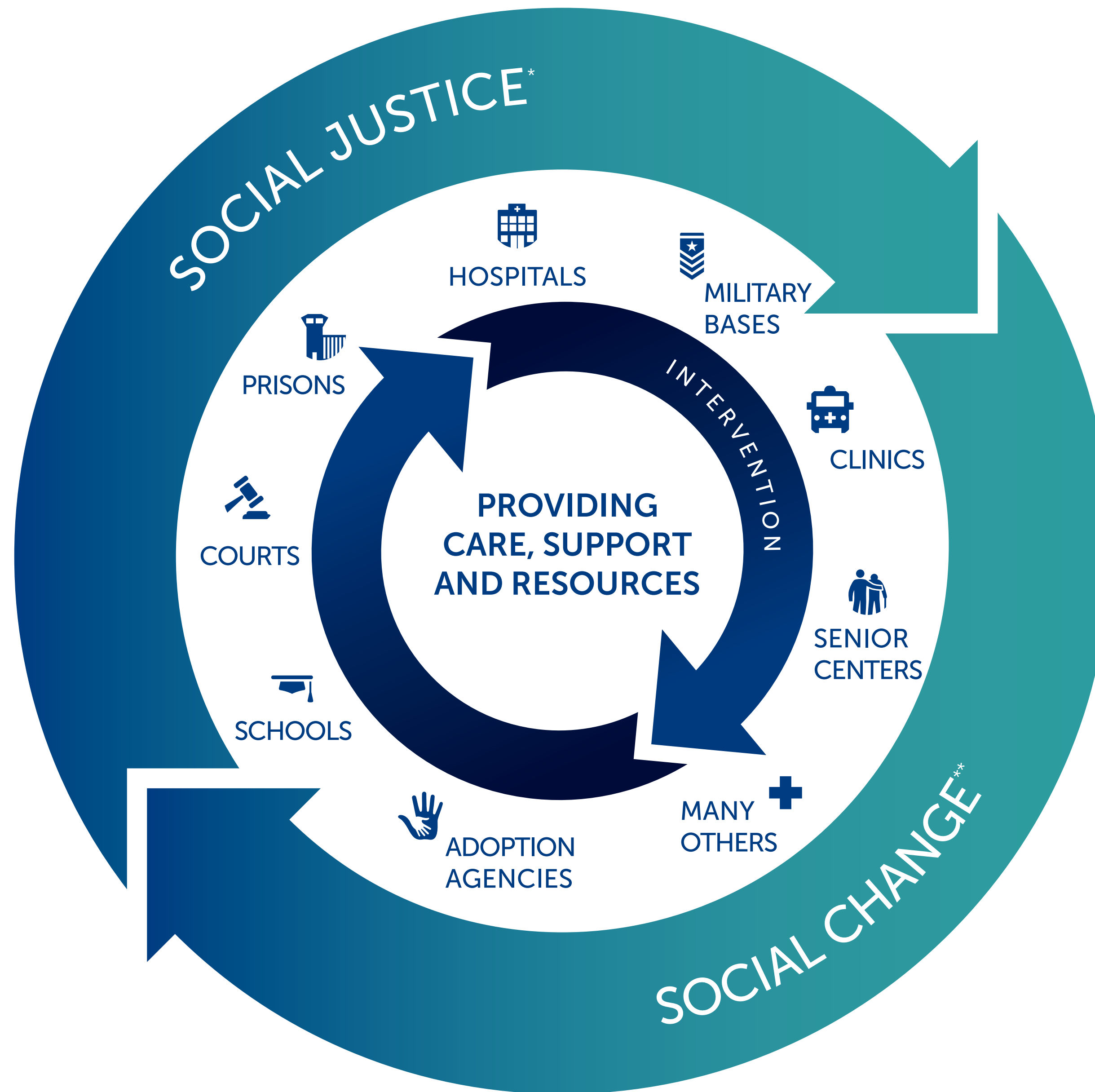
The mission of social work is to empower clients by addressing both private troubles and public issues, particularly for those who are underserved.

Social workers help people solve and cope with problems in their everyday lives.

Social workers focus on individuals, families, groups and communities to enhance social functioning and overall well-being.

Clinical social workers diagnose and treat mental, behavioral and emotional issues.

WHERE DOES SOCIAL WORK TAKE PLACE?



* Social Justice Solutions, <http://www.socialjusticesolutions.org/2013/01/15/the-definition-of-social-justice/>

** Creating a Culture of Peace, <http://creatingacultureofpeace.org/SocialChangeExamples.pdf>

SERVING THE UNDERSERVED

NEARLY
13%
of Americans live below the poverty line.¹

4.1 MILLION
REFERRALS
of alleged child abuse or neglect were received by child protection agencies in 2017.²

18.9%
OF THE U.S. POPULATION
is affected by mental illness during a given year.³

MORE THAN
1 IN 100
ADULTS
are in jail or prison.⁴

SOCIAL WORKERS ARE AT THE FRONTLINES FOR VULNERABLE POPULATIONS, PROVIDING CARE, SUPPORT AND RESOURCES.

1. U.S. Census Bureau, https://www.census.gov/search-results.html?q=Poverty&page=1&stateGeo=none&searchtype=web&ccsp=SERP&_charset_=UTF-8

2. <https://www.acf.hhs.gov/media/press/2019/child-abuse-neglect-data-released>

3. National Institute of Mental Health, <https://www.nimh.nih.gov/health/statistics/mental-illness.shtml>

4. Pew Charitable Trusts, <https://www.pewtrusts.org/en/research-and-analysis/articles/2017/01/12/us-adult-incarceration-rate-declines-13-percent-in-8-years>

AS A SOCIAL WORKER, YOU ARE NEEDED

There are **680,000**
social workers¹...

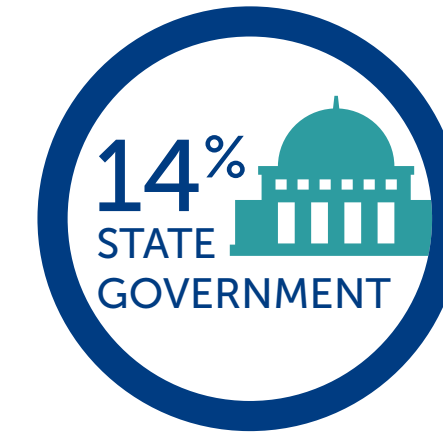
That number is expected

to **GROW**

16%
by 2026²

...much faster than
the average for all
other occupations²

WHAT DOES THE SOCIAL WORK JOB MARKET LOOK LIKE?³



THE U.S. DEPARTMENT OF VETERANS AFFAIRS

EMPLOYS MORE THAN

13,000

professional
social workers⁴

THE AMERICAN RED CROSS

Professional social workers
MAKE UP MORE THAN 40%
of all their disaster mental
health volunteers⁴

1. Bureau of Labor Statistics, U.S. Department of Labor, Social Workers, On the Internet at <https://www.bls.gov/ooh/community-and-social-service/social-workers.htm> (visited April 17, 2019)

2. Bureau of Labor Statistics, U.S. Department of Labor, Social Workers, On the Internet at <https://www.bls.gov/ooh/community-and-social-service/social-workers.htm> (visited April 18, 2019). Data reflects a projected percentage change in employment from 2016-2026 and may not reflect local economic conditions.

3. Bureau of Labor Statistics, U.S. Department of Labor, Social Workers, On the Internet at <https://www.bls.gov/ooh/community-and-social-service/social-workers.htm#tab-3> (visited April 17, 2019)

4. Social Workers, <https://www.socialworkers.org/News/Facts/Social-Workers>



THE ROLE OF A SOCIAL WORKER CAN TAKE MANY FORMS

MENTAL HEALTH
PROFESSIONAL

SOCIAL WORK
CASE MANAGER

SCHOOL SOCIAL WORKER

HOSPITAL
SOCIAL WORKER

PSYCHOTHERAPIST

LICENSED
SOCIAL WORKER

CLINICAL
SOCIAL WORKER

HEALTH MANAGER

DIALYSIS
SOCIAL WORKER

THERAPIST

FAMILY COUNSELOR

DIRECTOR OF
SOCIAL WORK

CLINICAL MANAGER

SUBSTANCE ABUSE
COUNSELOR

COUNSELOR

NOTE: This is intended to be a sampling of potential social work roles and not an exhaustive list.



SELECTING A SOCIAL WORK DEGREE PROGRAM //

ARE YOU LOOKING FOR:

An innovative, relevant curriculum that includes field experience?

Community and support?

An online degree program, with flexible learning options, where you don't have to commute to class every day?

A program that lets you work at your own pace?

Faculty comprised of industry experts, recognized in their field?

Generalist or specialized practice?

1

DETERMINE WHAT POPULATION(S) YOU ARE INTERESTED IN WORKING WITH

GENERALIST AND SPECIALIZED PRACTICE

Specialized practice builds on generalist practice, adapting and extending competencies for specific populations, problem areas, methods of intervention and perspectives or approach to practice. Specialized practitioners advocate on behalf of clients and constituencies in their area of practice.

BE SURE THE DEGREE PROGRAM YOU SELECT HAS TRACKS FOR YOUR DESIRED POPULATION(S).



CHAMBERLAIN UNIVERSITY OFFERS THREE TRACKS:



CRISIS AND RESPONSE INTERVENTIONS

Develop intervention strategies to address the immediate and long-term needs of trauma victims and their caregivers. Design proactive crisis plans, prepare for future emergencies and mobilize appropriate responses to international and domestic crises.



MEDICAL SOCIAL WORK

Address the emotional and social problems that often accompany or are caused by physical illness. Advocate for patients, provide counseling and connect patients with community resources.



TRAUMA

Provide clinical services to those with a history of trauma across the lifespan, including children, adolescents, adults, survivors and perpetrators, and to those who have experienced a wide range of traumas.



2

CONSIDER THE DEGREE LEVEL AND LICENSING YOU WILL NEED

BACHELOR OF SOCIAL WORK (BSW)

Social workers possessing only a bachelor's degree typically have limitations on their job opportunities and earning potential when compared to those with higher degrees and certifications.

MASTER OF SOCIAL WORK (MSW)

Whether someone has served as a social worker for decades or wishes to change careers after earning a bachelor's degree in another discipline, an MSW degree can serve as a bridge to advancement opportunities or a new career.

A master's degree in social work is increasingly required or strongly preferred for any social work position beyond entry-level. Careers in management, ethics and other specialties often require an MSW.

LICENSED CLINICAL SOCIAL WORKER (LCSW)

Graduates are eligible to seek licensure in their respective state according to the state's standards and regulations.

Most states require a bachelor's degree in social work or related field combined with a Master of Social Work degree before obtaining licensure.*

Licensure requirements for social work varies from state to state. To learn the requirements of your state, visit: humanservicesedu.org

* <https://socialworklicensure.org/articles/social-work-license-requirements/>



THE CHAMBERLAIN UNIVERSITY MSW DEGREE PROGRAM

DESIGNED TO PREPARE STUDENTS

with an advanced generalist specialization to work across systems, lead task groups and provide high-quality direct practice services to clients.

CULTURALLY RESPONSIVE CURRICULUM PREPARES GRADUATES

to be agents of social change in their communities and throughout the world in the context of healthcare, mental health and support services.

EXPERIENCED, PASSIONATE FACULTY WORKING

within the social work field to make an impact on their communities.

3 EVALUATE THE ADMINISTRATION AND FACULTY YOU WILL BE WORKING WITH AND THE AVAILABLE RESOURCES

WHAT YOU ARE BEING TAUGHT IS AS IMPORTANT AS WHO IS TEACHING YOU.

Are you learning from faculty who served as professional social workers in the field?

Are the faculty still active in the social work field and working to make a continuous impact?

What are the requisite degree levels for faculty?

What are the average class sizes?

What portion of your curriculum will be taught by teaching assistants?

What experience does the faculty have with online education?



CHAMBERLAIN UNIVERSITY OFFERS...

EXPERT FACULTY, INSTRUCTION AND SUPPORT

Your faculty will be nurturing and understand that it takes a special person to pursue a career in the social work field.

SMALL CLASS SIZES TO FOSTER FACULTY-STUDENT RELATIONSHIPS

Students benefit from a student-centric learning environment enhanced by small class sizes, personalized attention from faculty, diverse clinical-learning opportunities, experiential learning and a singular focus on preparing healthcare professionals for successful careers.

1-ON-1 ADVISING AND SUPPORT

Your admission representative will assist you throughout the enrollment process – from requesting your official transcripts to registering for your first class. Your Student Services team provides personalized support and helps you plan your degree program, register for classes and coordinate financing.*

Complimentary, confidential support services through Perspectives are available 24/7 to address any issues affecting your daily life and academic performance.

* Financial aid is available to those who qualify.

VIRTUAL CLASSROOM, REAL 24/7 SUPPORT

- Academic support resources
- 24/7 access to our online library and databases
- Technical support and Help Desk resources
- Online access to your Student Services team

4

DETERMINE HOW LONG THE DEGREE PROGRAM WILL TAKE TO COMPLETE

DEGREE COMPLETION TIMES WILL VARY FROM STUDENT TO STUDENT. THERE ARE MANY FACTORS THAT WILL IMPACT HOW LONG IT WILL TAKE TO COMPLETE YOUR DEGREE, INCLUDING:



TOTAL NUMBER OF COURSES AND CREDIT HOURS REQUIRED

Be sure to ask for a sample curriculum grid to see how the average student might progress through the program.

YOUR CURRENT DEGREE STATUS

Some universities offer proficiency or advanced standing credit for master's level students who already have an undergraduate degree in the same field.

FULL- OR PART-TIME ENROLLMENT

Weigh your options for full- or part-time enrollment based on your work-life responsibilities to determine which option better fits your schedule.

ON-CAMPUS OR ONLINE COURSEWORK

While online coursework allows for more flexibility and innovative learning options, on-campus programs are available to those who desire a traditional learning experience.

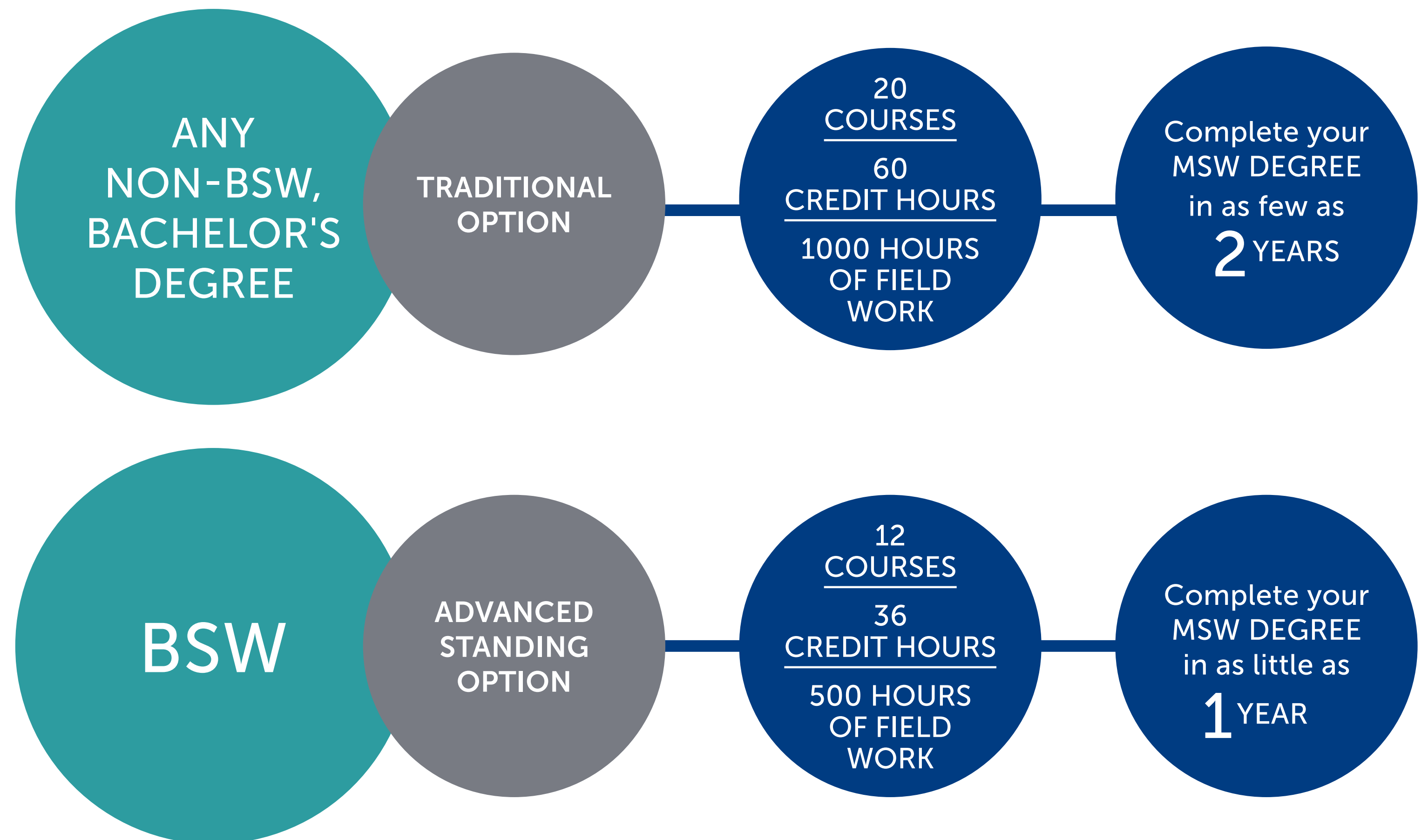
IMMERSION AND FIELD EXPERIENCE REQUIREMENTS

Online programs can have on-site and in-the-field requirements. Be sure you fully understand those requirements and are prepared for the time, travel and costs necessary to meet those requirements.

Be sure to evaluate the universities maximum timeframe and rate of progress policies in their academic catalog. Exceeding the timeframe or failing to make satisfactory progress can alter your required coursework and credit hours, impact the time required to complete your degree and effect your total tuition expenses and eligibility for financial aid.

CHAMBERLAIN'S MSW DEGREE PROGRAM

Designed to meet students where they are in their academic journey – we offer two options that, regardless of degree level or experience, will prepare you for a broad range of social work based on your passions.



5 UNDERSTAND YOUR ON-SITE AND FIELD EXPERIENCE REQUIREMENTS

WHAT IS AN IMMERSION EXPERIENCE?

Immersion experiences provide students the opportunity to gain real-world experience and assess their readiness for interactions with clients and organizations.

- Students participate in practice exercises that will prepare them for specialized field experiences.
- The immersion will also provide faculty and staff the opportunity to evaluate students and their ability to engage with peers and potential clients.

WHAT ARE FIELD EXPERIENCES?

Field experiences are customized, integrated learning experiences in a social work setting based on your interests and goals.

Field education prepares students for social work practice through immediate application of theoretical knowledge in real-world situations.

CHAMBERLAIN'S MSW DEGREE PROGRAM

IMMERSION AND FIELDWORK EXPERIENCE REQUIREMENTS

FIELDWORK EXPERIENCE REQUIREMENTS

All Chamberlain MSW students will have the opportunity to complete an integrated learning experience in a social work setting in order to earn an MSW degree. Field requirements are in alignment with CSWE accreditation standards.

TRADITIONAL OPTION

1000 HOURS OF FIELD EXPERIENCE

COMPLETED OVER 2 TO 3 YEARS

ADVANCED STANDING OPTION

500 HOURS OF FIELD EXPERIENCE

COMPLETED OVER TWO, 8-WEEK TERMS

IMMERSION EXPERIENCE REQUIREMENTS

Chamberlain MSW students are required to demonstrate specific competencies prior to entering fieldwork courses through the completion of the foundation and advanced-year immersions.



WHY CHOOSE CHAMBERLAIN UNIVERSITY? //

At Chamberlain, we are relentless about helping you succeed and achieving your academic and career goals. We are committed to providing you with the tools and resources you need to be successful, while being immersed in a community of care exemplified by faculty and student support.

OUR MISSION: To educate, empower and embolden diverse healthcare professionals who advance the health of people, families, communities and nations.

We believe that if we take extraordinary care of our students, we will graduate extraordinary healthcare professionals who will have a significant and positive impact on healthcare around the world.

CARE DISTINGUISHES US *CHAMBERLAIN CARE*[®]



**CARE FOR OUR STUDENTS, HEALTHCARE PARTNERS,
PATIENTS AND THE COMMUNITY AT LARGE.**

CHAMBERLAIN OFFERS...

ONLINE
COURSEWORK
WITH
EXPERIENTIAL
LEARNING
ACTIVITIES*

CLASSES
START EVERY
8
WEEKS

MANAGING PROFESSIONAL AND PERSONAL COMMITMENTS CAN BE SOME OF THE BIGGEST OBSTACLES TO ADVANCING YOUR DEGREE.

Whether you are a night owl or an early riser, work a third shift, have family obligations or are simply trying to promote a better work-life balance, Chamberlain's flexible online coursework allows you to participate in class at the times that are most convenient for you and most conducive to your learning style.

TAKE ADVANTAGE OF:

- 24/7 access
- No mandatory login or chat times required.
- Engaging experiential and interactive learning activities and resources including video, real-life case studies and simulations taught by expert faculty.

WITH ONGOING ENROLLMENT, YOU CAN
START YOUR MSW ON YOUR OWN TIME.

* The Chamberlain University College of Health Professions Master of Social Work (MSW) degree program requires immersion experience and on-site fieldwork.

LOOKING TO ENROLL OR LEARN MORE?

OUR COMMITMENT TO DELIVERING A HIGH VALUE EDUCATION

that prepares students to thrive as healthcare professionals is stronger than ever.

Accredited by the Higher Learning Commission*

94,000 STRONG
(31,000 students and 82,000 alumni)**

Chamberlain graduates are equipped with the knowledge, skills, values and beliefs required to both succeed and make a difference in today's complex healthcare environment.

* For the most updated accreditation information, visit chamberlain.edu/accreditation

** Chamberlain University and Deaconess College of Nursing graduates. Chamberlain National Registrar, August 2020.

WE'VE CREATED A SIMPLE CHECKLIST TO MAKE ENROLLING FOR YOUR MSW SIMPLE AND FAST.

- COMPLETING/COMPLETED A BACHELOR'S DEGREE FROM AN ACCREDITED COLLEGE OR UNIVERSITY
- HAVE ACCESS TO YOUR GPA OR TRANSCRIPT
- SCHEDULE AN INTERVIEW WITH A CHAMBERLAIN ADMISSION REPRESENTATIVE

Successful completion of pre-enrollment screenings will be required for admission.

The Leading the Way Social Work Grant provides eligible students*** with a **30% TUITION SAVINGS, UP TO \$12,510**, on MSW coursework at Chamberlain University for the duration of their enrollment.

To speak with a Chamberlain admission representative who can answer your questions, call **888.556.8226**.

To apply, visit chamberlain.edu/msw

***The grant availability for new students will be evaluated each session.

CHAMBERLAIN UNIVERSITY IS **HLC ACCREDITED**
chamberlain.edu | **888.556.8226**

Be a part of our nationwide
nursing community – find us on:



CHAMBERLAIN
U N I V E R S I T Y

COLLEGE of HEALTH
PROFESSIONS

Chamberlain University | National Management Offices | 500 W. Monroe St., Suite 1300 | Chicago, IL 60661 | 888.556.8226

Chamberlain University is accredited by the Higher Learning Commission (www.hlcommission.org), an institutional accreditation agency by the U.S. Department of Education. Chamberlain University's Master of Social Work degree program is accredited by the Council on Social Work Education's Commission on Accreditation, www.cswe.org. For the most updated accreditation information, visit chamberlain.edu/accreditation. To report unresolved complaints to the Illinois Board of Higher Education visit their webpage at <http://complaints.ibhe.org/> or by mail to 1 N. Old State Capitol Plaza, Suite 333, Springfield, IL 62701-1377. Program/program option availability varies by state/location. Chamberlain reserves the right to update information as it becomes available. Information is current at the time of publication.